

BioCV
WELFARE AND TRUST FOR YOUR LIVESTOCK.

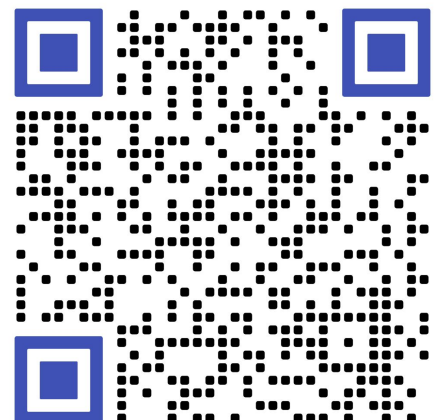
Product & System Brochure

Digitize your livestock.

BioCV - your key technology for sustainable and efficient livestock production. Monitor your herd's health and activity in real time, gain precise insights with our advanced ear tag technology, and secure your farm's future with data-driven decisions and increased operational efficiency. Connect efficiency and animal welfare with technology - today.

BioCV GmbH
44894 Bochum
Rüsingstraße 45
HR 18787

www.biocv.de/en



Livestock 4.0

Content

- 1 System overview
- 2 BioTag
- 3 BioNode
- 4 Web App
- 5 Mobile App

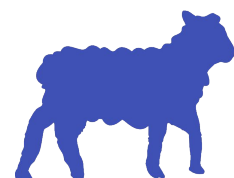
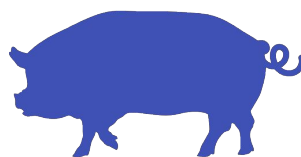
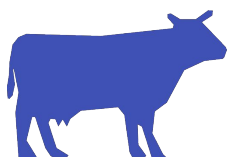
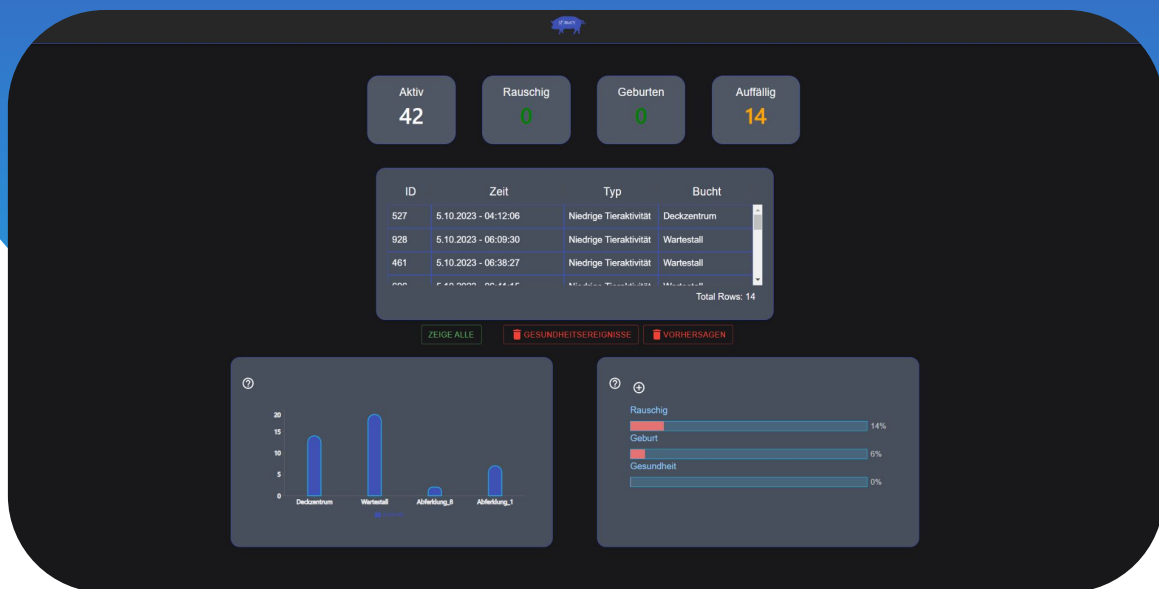
System overview

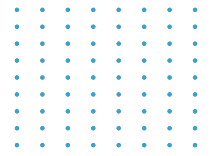
Your digital barn employee.

Welcome to BioCV and our LISA system! LISA stands for "Livestock Interface for Sensor-Data and Analytics". Our platform supports you in your daily handling of animals and enables continuous monitoring. You will receive important notifications on your smartphone to keep you informed about incidents in the barn at any time.

With LISA, you can get data on your pigs' fertility, your cattle's oestrus behaviour, health data such as fever, and even predictions of upcoming birth with 12 hours' notice. You can remotely identify your animals and manage your herd's medication schedule.

Our system uses neural networks and machine learning to provide preventive measures and early problem treatment. Our dedicated BioNodes provide continuous monitoring of your animals and collect environmental data such as barn temperature and humidity.





Livestock Interface for Sensor-Data and Analytics

Services at a glance

Your digital stable employee.

Health monitoring: Lisa monitors the health of your animals, keeps an eye on important factors such as temperature and movement and detects problems such as lameness at an early stage.

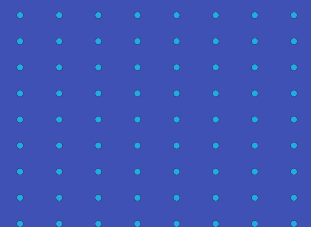
Estrus analysis: Lisa identifies the roughing of your sows in the mating center. This increases the chances of success and contributes to successful breeding.

Animal localization: Lisa allows you to know the exact position of your animals in real time without having to physically approach them. This increases efficiency, minimizes stress for the animals and increases your safety.

Occupancy assessment: Lisa can reliably tell you whether your sows are pregnant. This information forms a solid basis for your planning.

Birth preparation: Shortly before farrowing, Lisa informs you 12 hours in advance so that you can prepare everything in time for an optimal birth.

Medication management: You can create individual treatment plans for your pigs, and Lisa reminds you of the upcoming medication appointments so that your animals are always well taken care of.



BioTag

More than an ear tag.



Our BioTags are no ordinary ear tags for animals - they are the heart of our LISA system. These specially developed ear tags are much more than just name tags for your animals. They are real helpers that provide you with important information.

Temperature and motion sensors are integrated into our BioTags. This means that they not only identify the animal, but also constantly collect information about your animal's temperature and activity. This valuable data is sent to our system via Bluetooth.

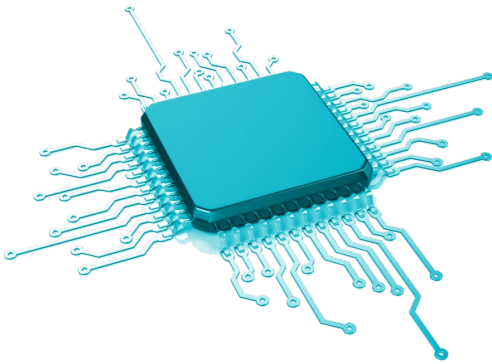
With BioTags you can keep an eye on the well-being and activity of your animals. They are like a link between traditional animal husbandry and modern technology. BioTags help to take good care of the animals and make your farm more efficient.

The idea behind BioTags is to help you keep your animals happy and healthy while optimizing your farming operation. It's a smart combination of old methods and new ways to achieve the best for your animals and your farm.

Price	18,89 €
Maße	40x58x15 mm
Information	BLE, NFC,
Weight	~ 18 g
Uptime	Up to 3 years

BioNode

Receiver. Sensor Station. Access Point.



The node acts like a real helper in the barn! Once installed, it performs its work consistently and reliably. In each compartment, a node is simply attached to the wall and connected with a PoE cable. This way, it automatically receives Internet and power.

That's how simple the installation is!

The node is well-equipped for all requirements in the barn with IP66 protection class. It uses BLE technology to receive the data from the ear tags. In addition, it always keeps an eye on the barn temperature by means of an integrated temperature sensor, so that a comfortable climate is ensured for the animals. To be up-to-date at all times, the node offers WLAN throughout the barn.

The node assigns the animals whose data it receives to their correct place in the barn. This means that you can see where your animals are at any time.

Price	377,00 €
Measurements	240x115x75 mm
Connector	RJ45, Plug&Play
Voltage	37 - 57 V PoE
Sensors	Luftfeuchtigkeit, Temperatur

Mobile App

Directly on the animal, for the animal.



Our mobile app for the LISA system represents a practical tool that allows you to manage all information directly on your smartphone. Regardless of whether you are in the barn or in the field, the app presents everything you need to know at a glance.

The app is an essential part of realizing the full potential of our system. Events reported here help to improve future predictions – and all this is done with just a few simple steps within the app.

In addition, the app allows you to easily scan the ear tags and assign further information to them or retrieve existing ones.

The app can also be used to locate your animals. So if you are unsure where they are, the app will help you find them.

Our mobile app optimizes the handling of the LISA system by making it even more user-friendly and practical. You always keep all relevant data at hand, can monitor your animals and manage the ear tags efficiently. Experience modern agriculture designed to save you time and work.

Web App

Full control. From anywhere.



In an era where mobile apps are increasingly becoming the standard, we nevertheless strive to offer farmers the possibility to conveniently view the data and information provided by LISA on their office computer and to plan work in advance.

Furthermore, it is possible to export all data in various formats in order to import them into other management systems. In addition, we are working on a bidirectional data integration for the most commonly used stock recording and breeding programs.

In the web application, you can view your different stables in a clear overview. All data and information is archived here. You get access to detailed movement and temperature profiles of each animal.



The BioCV

For you. For agriculture.
For the future of animal husbandry.

Who is the BioCV?

BioCV is a company dedicated to improving animal agriculture through modern technology. We aim to help farmers operate more transparently and efficiently while promoting the health, well-being, and productivity of their animals.

What makes us truly unique is our combination of hardware and software. We use advanced technology such as neural networks and machine learning to analyze the data our devices collect. This allows farmers to identify important physiological events and predict potential health problems.

From accurately determining the right time to breed to predicting disease and stress levels, our technology enables farmers to make smart and proactive decisions.

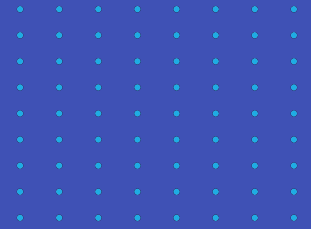


BioCV

WELFARE AND TRUST FOR YOUR LIVESTOCK.

Edition Q2 2023

Copyright 2023 BioCV GmbH



BioCV GmbH
44894 Bochum
Rüsingstraße 45
HR 18787

www.biocv.de

